




HÄFELE

# HÄFELE TWENTY ONE



UNIQUELY  
CRAFTED.  
EXCLUSIVELY  
FROM  
HÄFELE.





AS PART OF A GLOBAL INITIATIVE, Häfele Worldwide partnered with designers around the globe to create proprietary, transitional-to-contemporary collections, tailored to the needs of our market. The result of that work is what we're proud to share in this brochure, featuring U.S.-based designers Addison Weeks, Matthew Quinn, Ken Harroff and Belwith Keeler.

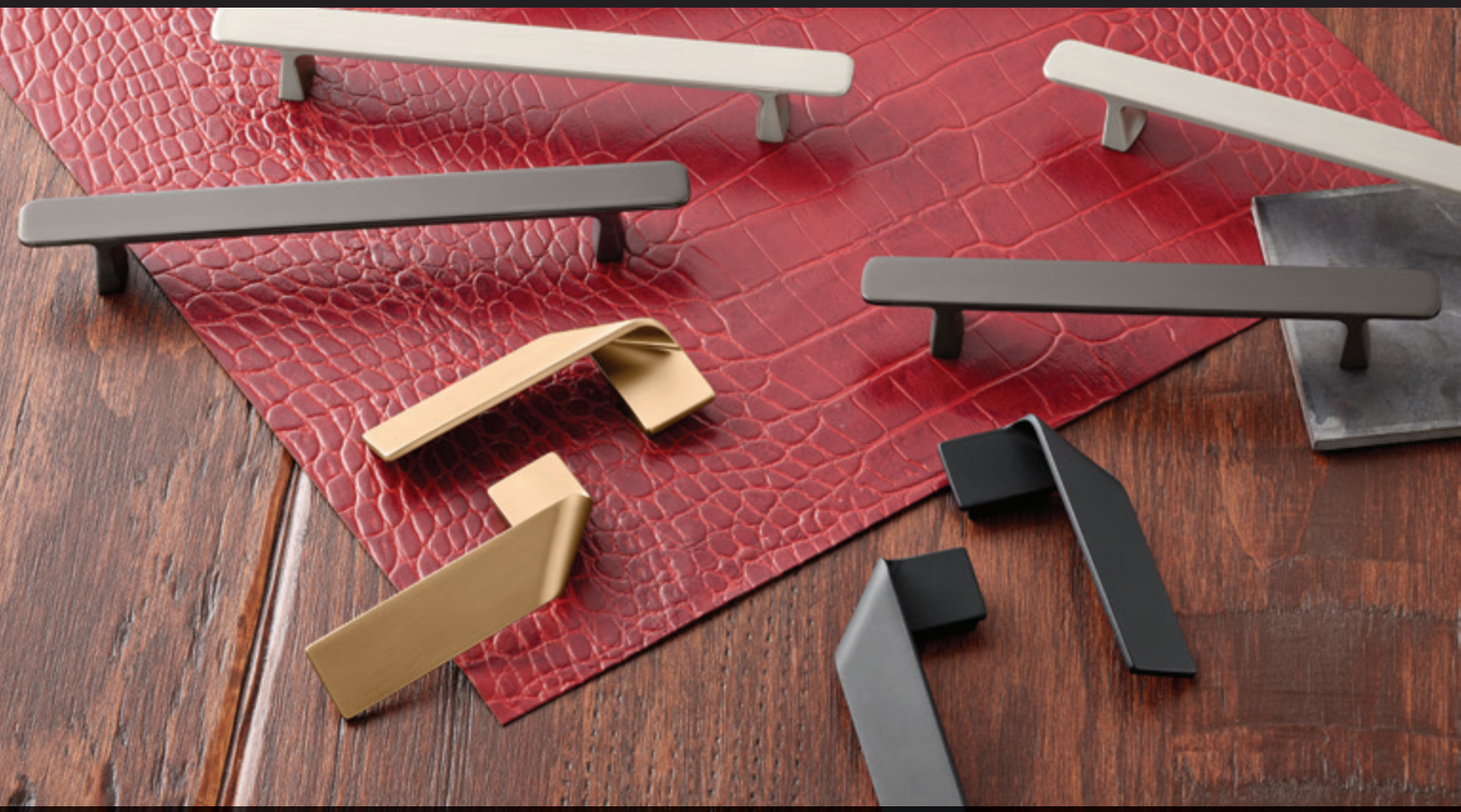
A modern interior scene featuring a red leather armchair with a matching cushion, a wooden side table with a plant, and a coffee table. The room is brightly lit, with sunlight casting shadows on the floor. A brown banner is overlaid on the top half of the image, containing the text "MID-CENTURY MODERN".

# MID-CENTURY MODERN



A modern dining room scene. In the foreground, a dark wood dining table with a thick top and a solid black base. On the table, a wooden tray holds a black teapot, a black cup on a saucer, and a small wooden bowl. To the right, a black chair with a metal frame and a black seat. In the bottom left corner, a black wicker stool. The background features a white wall with a large abstract artwork consisting of a black square, a black semi-circle, and a black horizontal bar. A large orange banner with the word 'MODERN' in white capital letters is positioned across the middle of the image.

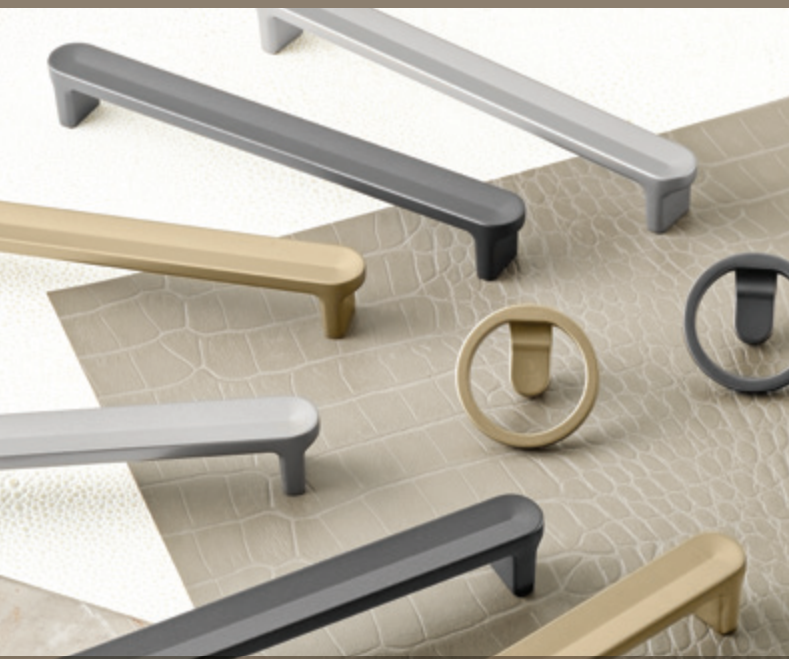
# MODERN



# URBAN/INDUSTRIAL

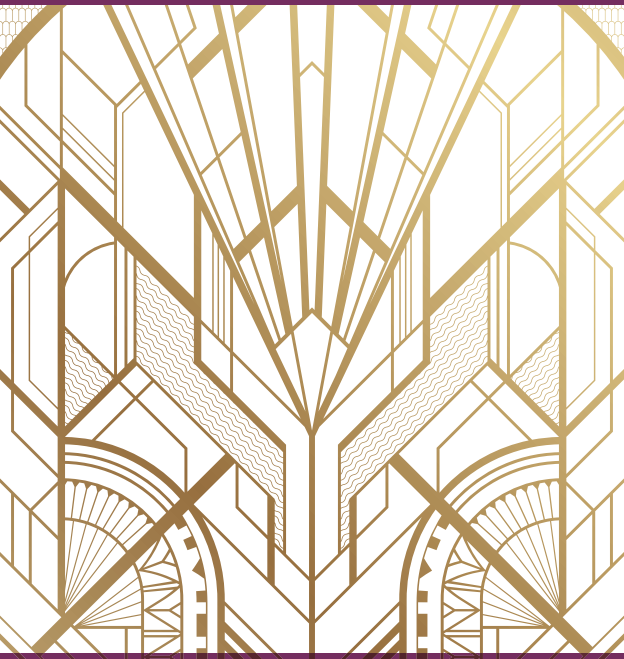
A modern industrial-style bathroom. The room features a wooden vanity with two white sinks and a mirror above it. A glass shower enclosure is visible on the right. The walls are made of concrete, and there are large windows on the left. A large white sheet is laid out on the floor in the foreground. The overall aesthetic is clean, functional, and industrial.





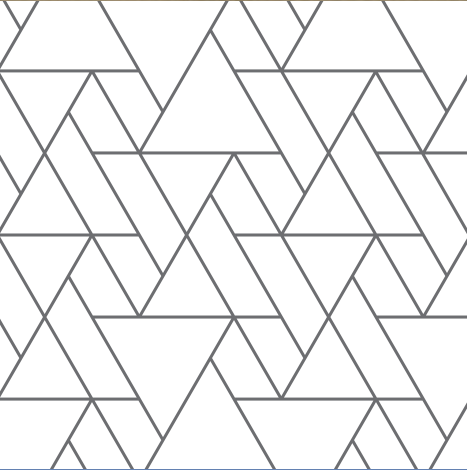


# ART DECO/GLAM






# TRANSITIONAL



# INSPIRATION. HANDLED.



THE TRENDS OF TODAY ARE NOT THE TRENDS OF TOMORROW - there is always more to come. We're continuously working to investigate, discover and bring you the trends of tomorrow too. Our ongoing commitment to collaboration with industry leaders ensures you'll have the decorative hardware styles, designs and finishes which will be ideally suited for today's projects and all the inspired projects you have moving forward.



**HÄFELE**

**Häfele America Co.** | 3901 Cheyenne Drive | Archdale, NC 27263  
**Phone:** 800 423 3531 | **Fax:** 800 325 6197 | **Showrooms:** New York, Archdale, Los Angeles

[hafele.com](http://hafele.com)

© & TM Häfele GmbH & Co KG and/or Häfele America Co. Other trademarks referenced are owned by their respective owners. All rights reserved. Materials, designs and design elements shown herein may be the subject of US and International copyright and other forms of legal protection.